



MLC-2 (phospho Thr17/S18) Polyclonal Antibody

Catalog No	YP-Ab-03058
Isotype	IgG
Reactivity	Human;Mouse;Rat
Applications	IHC;IF;ELISA
Gene Name	MYL12A
Protein Name	Myosin regulatory light chain 12A
Immunogen	The antiserum was produced against synthesized peptide derived from human MLC-2 around the phosphorylation site of Thr17 and Ser18. AA range:5-54
Specificity	Phospho-MLC-2 (T17/S18) Polyclonal Antibody detects endogenous levels of MLC-2 protein only when phosphorylated at T17/S18.
Formulation	Liquid in PBS containing 50% glycerol, 0.5% BSA and 0.02% sodium azide.
Source	Polyclonal, Rabbit,IgG
Purification	The antibody was affinity-purified from rabbit antiserum by affinity-chromatography using epitope-specific immunogen.
Dilution	WB 1:500-2000 ,IHC: 1/100 - 1/300. ELISA: 1/10000.. IF 1:50-200
Concentration	1 mg/ml
Purity	≥90%
Storage Stability	-20°C/1 year
Synonyms	MYL12A; MLCB; MRLC3; RLC; Myosin regulatory light chain 12A; MLC-2B; Myosin RLC; Myosin regulatory light chain 2; nonsarcomeric; Myosin regulatory light chain MRLC3; MYL12B; MRLC2; MYLC2B; Myosin regulatory light chain 12B; MLC-2A; MLC-2; M
Observed Band	
Cell Pathway	stress fiber,cytosol,brush border,myosin complex,myosin II complex,Z disc,apical part of cell,extracellular exosome,
Tissue Specificity	Coronary artery,Epithelium,Placenta,Skeletal muscle,Skin,Testis,
Function	function:Myosin regulatory subunit that plays an important role in regulation of both smooth muscle and nonmuscle cell contractile activity via its phosphorylation. Implicated in cytokinesis, receptor capping, and cell locomotion.,miscellaneous:This chain binds calcium.,PTM:Phosphorylation increases the actin-activated myosin ATPase activity and thereby regulates the contractile activity. It is required to generate the driving force in the migration of the cells but not necessary for localization of myosin-2 at the leading edge.,similarity:Contains 3 EF-hand domains.,subunit:Myosin is an hexamer of 2 heavy chains and 4 light chains.,

**Background**

This gene encodes a nonsarcomeric myosin regulatory light chain. This protein is activated by phosphorylation and regulates smooth muscle and non-muscle cell contraction. This protein may also be involved in DNA damage repair by sequestering the transcriptional regulator apoptosis-antagonizing transcription factor (AATF)/Che-1 which functions as a repressor of p53-driven apoptosis. Alternate splicing results in multiple transcript variants. A pseudogene of this gene is found on chromosome 8.[provided by RefSeq, Dec 2014],

matters needing attention

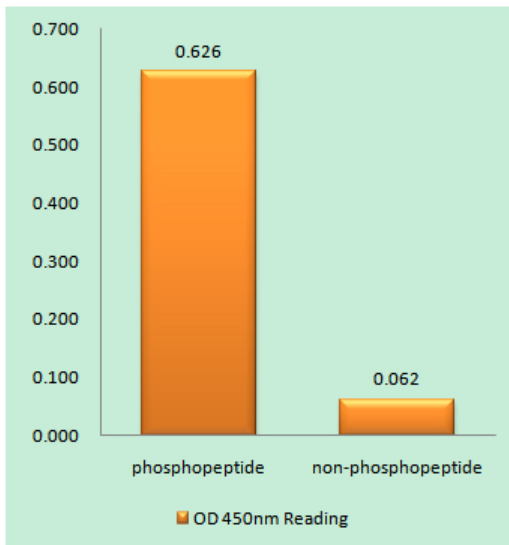
Avoid repeated freezing and thawing!

Usage suggestions

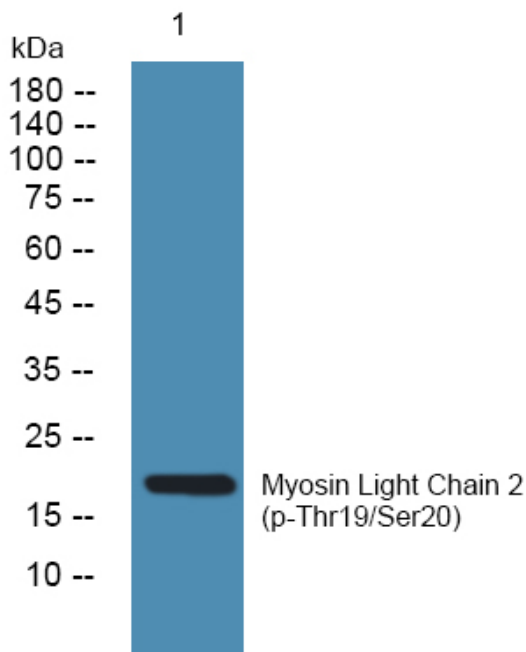
This product can be used in immunological reaction related experiments. For more information, please consult technical personnel.



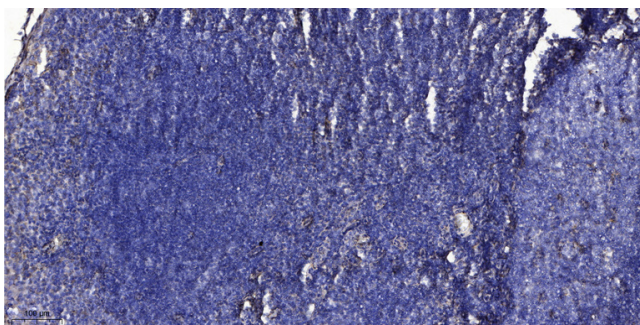
Products Images



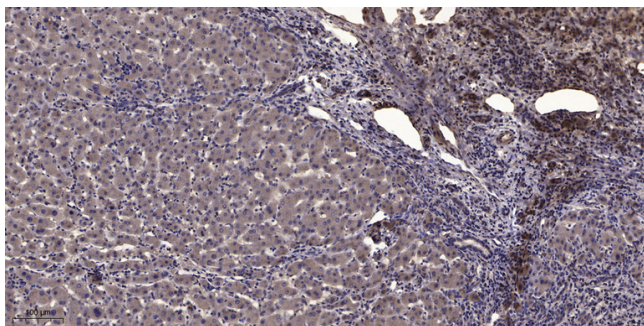
Enzyme-Linked Immunosorbent Assay (Phospho-ELISA) for Immunogen Phosphopeptide (Phospho-left) and Non-Phosphopeptide (Phospho-right), using MLC-2 (Phospho-Thr17+Ser18) Antibody



Western blot analysis of lysates from SW480 cells, primary antibody was diluted at 1:1000, 4° over night



Immunohistochemical analysis of paraffin-embedded human tonsil. 1, Antibody was diluted at 1:200(4° overnight). 2, Tris-EDTA, pH9.0 was used for antigen retrieval. 3, Secondary antibody was diluted at 1:200(room temperature, 30min).



Immunohistochemical analysis of paraffin-embedded human liver cancer. 1, Antibody was diluted at 1:200(4° overnight). 2, Tris-EDTA, pH9.0 was used for antigen retrieval. 3, Secondary antibody was diluted at 1:200(room temperature, 45min).